

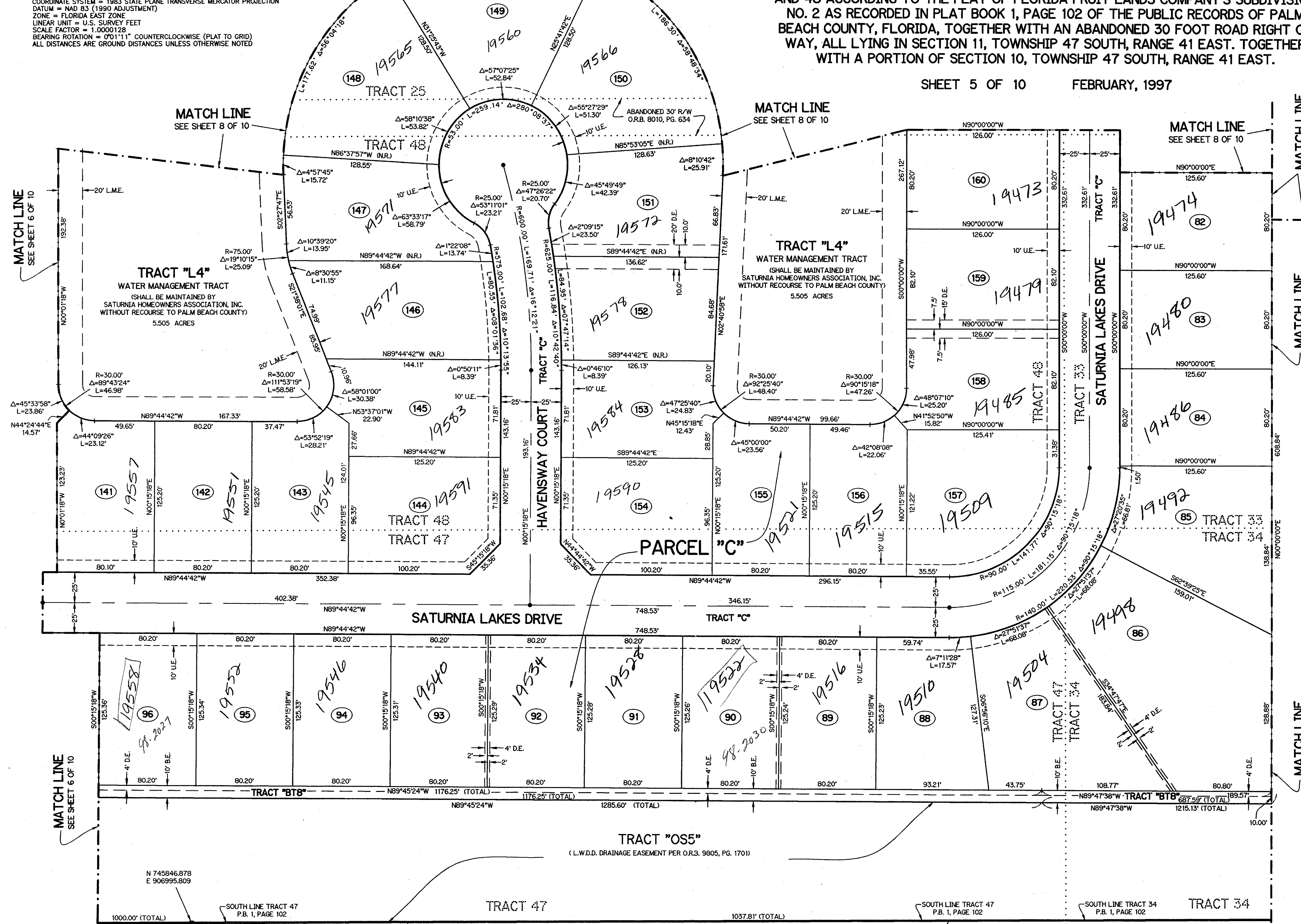
CAPELLA P.U.D. - PLAT ONE

A REPLAT OF A PORTION OF TRACTS 17 THRU 28, INCLUSIVE, 33, 34, 47 AND 48 ACCORDING TO THE PLAT OF FLORIDA FRUIT LANDS COMPANY'S SUBDIVISION NO. 2 AS RECORDED IN PLAT BOOK 1, PAGE 102 OF THE PUBLIC RECORDS OF PALM BEACH COUNTY, FLORIDA, TOGETHER WITH AN ABANDONED 30 FOOT ROAD RIGHT OF WAY, ALL LYING IN SECTION 11, TOWNSHIP 47 SOUTH, RANGE 41 EAST. TOGETHER WITH A PORTION OF SECTION 10, TOWNSHIP 47 SOUTH, RANGE 41 EAST.

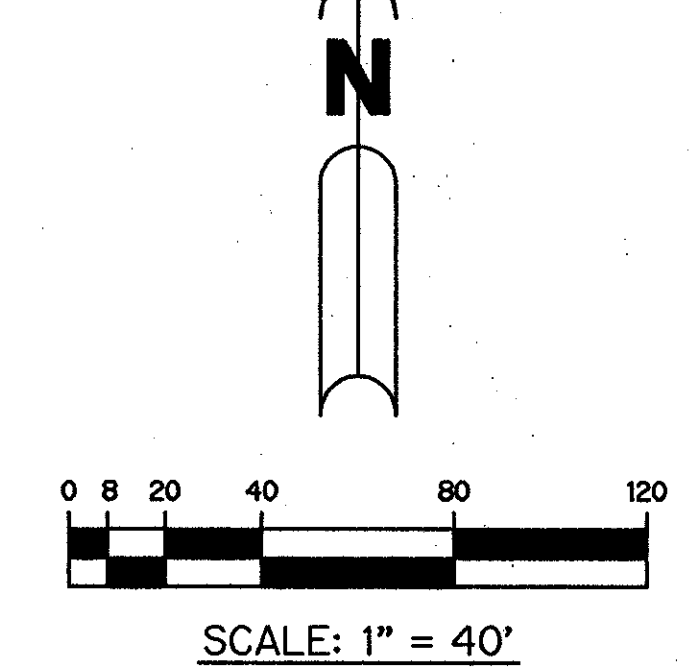
SHEET 5 OF 10 FEBRUARY, 1997

NOTE:

COORDINATES SHOWN ARE GRID COORDINATES
COORDINATE SYSTEM = 1983 STATE PLANE TRANSVERSE MERCATOR PROJECTION
DATUM = NAD 83 (1980 ADJUSTMENT)
ZONE = FLORIDA EAST ZONE
LINEAR UNIT = U.S. SURVEY FEET
SCALE FACTOR = 1.0000128
BEARING ROTATION = 0°11'1" COUNTERCLOCKWISE (PLAT TO GRID)
ALL DISTANCES ARE GROUND DISTANCES UNLESS OTHERWISE NOTED



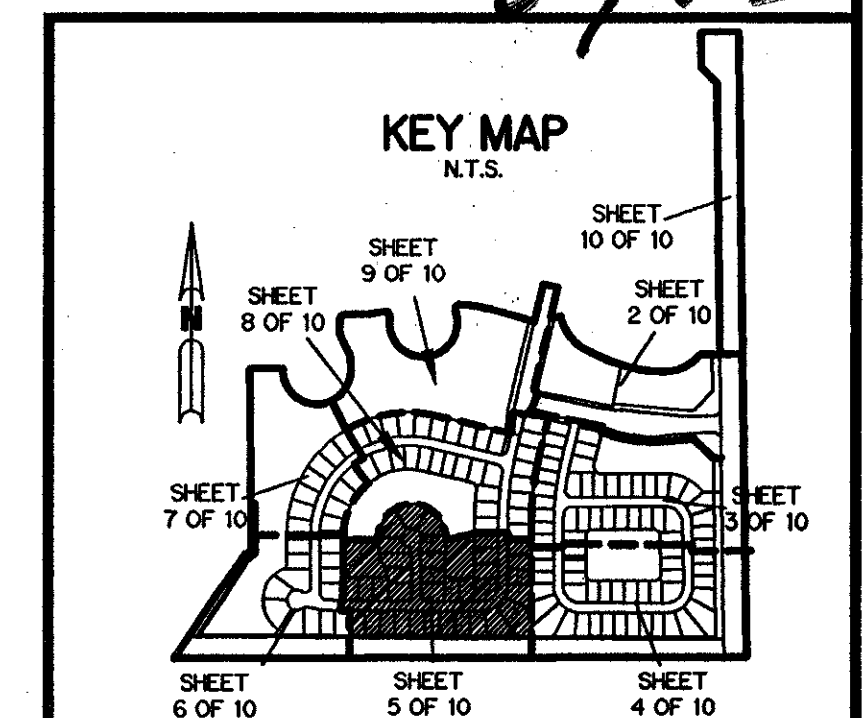
*PET. 96-44
ALOC. #0001
5/3/31M*



LEGEND:

- - PERMANENT REFERENCE MONUMENT, PSM #4213
- - PERMANENT CONTROL POINT, PSM #4213
- △ - DELTA ANGLE
- D.E. - BUFFER EASEMENT
- C. - CENTERLINE
- D.B. - DEED BOOK
- D.E. - DRAINAGE EASEMENT
- L. - ARC LENGTH
- L.A.E. - LIMITED ACCESS EASEMENT
- L.M.A.E. - LAKE MAINTENANCE ACCESS EASEMENT
- L.M.E. - LAKE MAINTENANCE EASEMENT
- L.W.D. - LAKE WORTH DRAINAGE DISTRICT
- N.R. - NOT RADIAL
- N.T.S. - NOT TO SCALE
- O.E. - OVERHANG EASEMENT
- O.R.B. - OFFICIAL RECORD BOOK
- P.B. - PLAT BOOK
- P.G.S. - PAGES
- P.S.M. - PROFESSIONAL SURVEYOR AND MAPPER
- R. - RADIUS
- R/W. - RIGHT-OF-WAY
- S.T. - SURVEY TIE
- U.E. - UTILITY EASEMENT
- N 737648.0171
E 905258.2326 - DENOTES STATE PLANE COORDINATES
- TRACT 22 - DENOTES TRACT NO. OF UNDERLYING PLAT (PLAT BOOK 1, PAGE 102)

SUBDIVISION - CAPELLA
BOOK 80 PAGE 83
FLOOD MAP ZONE
ZONING PUD1DR
ZIP CODE 33409
PUD NAME CAPELLA PLAT 1



THIS INSTRUMENT PREPARED BY
PERRY C. WHITE, P.S.M. 4213, STATE OF FLORIDA
LAWSON, NOBLE AND WEBB, INC.
ENGINEERS PLANNERS SURVEYORS
WEST PALM BEACH, FLORIDA

L.W.D.D. LATERAL CANAL NO. 43-WEST
(O.R.B. 1653, PG. 822)

0700-007